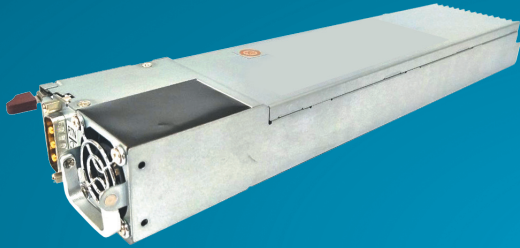


# CDR-2021-3M1

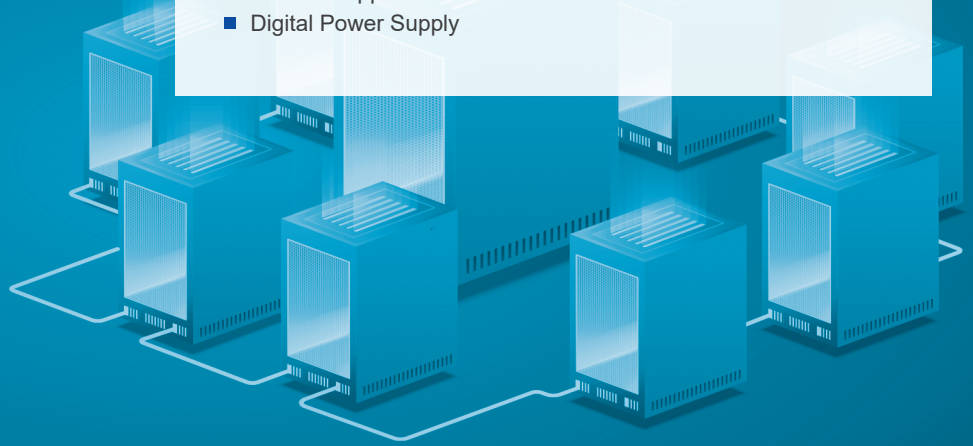
## 2000W Power Supply DC to DC Redundant

### FEATURES

- High Efficiency: 92%
- Hot Swappable
- PMBus Support
- Digital Power Supply
- Smart Fan Speed Control
- Active Power Factor Correction



■ Dimension : 346 x 76 x 40 mm (D x W x H)



## SPECIFICATIONS

### ▶ INPUT

Voltage	-36 to -66Vdc
Current	-40 to -44Vdc / 47 A -45 to -66Vdc / 52 A

### ▶ EFFICIENCY

Load (%)	Input -48Vdc
20%	88%
50%	92%
100%	87%

### ▶ OUTPUT

Parameter	12V (-40 to -44Vdc)	12V (-40 to -44Vdc)	5Vsb
Max Load	133.3 A	166.7 A	6A
Regulation	±5%	±5%	±5%
Ripple & Noise	120mVp-p	120mVp-p	50mVp-p

### ▶ PROTECTION, RELIABILITY, WARRANTY

Over Current Protection (OCP)  
Over Power Protection (OPP)  
Over Voltage Protection (OVP)  
Over Temperature Protection (OTP)  
Short Circuit Protection (SCP)  
Holdup Time: 50µs @ 75% Load  
MTBF: >150,000 hours @ 25 °C  
Warranty: 3 Years

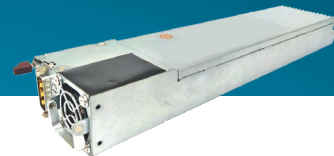
### ▶ ENVIRONMENTAL

Temperature	Operating : 0 to 50°C Non-operating : -10 to 60°C
Altitude	Operating : to 16,500 feet (5,000 meters) Non-operating : to 35,000 feet (10,580 meters)
Relative humidity	Operating : 20% to 90% RH, Non-condensing Storage : 5% to 95% RH, Non-condensing

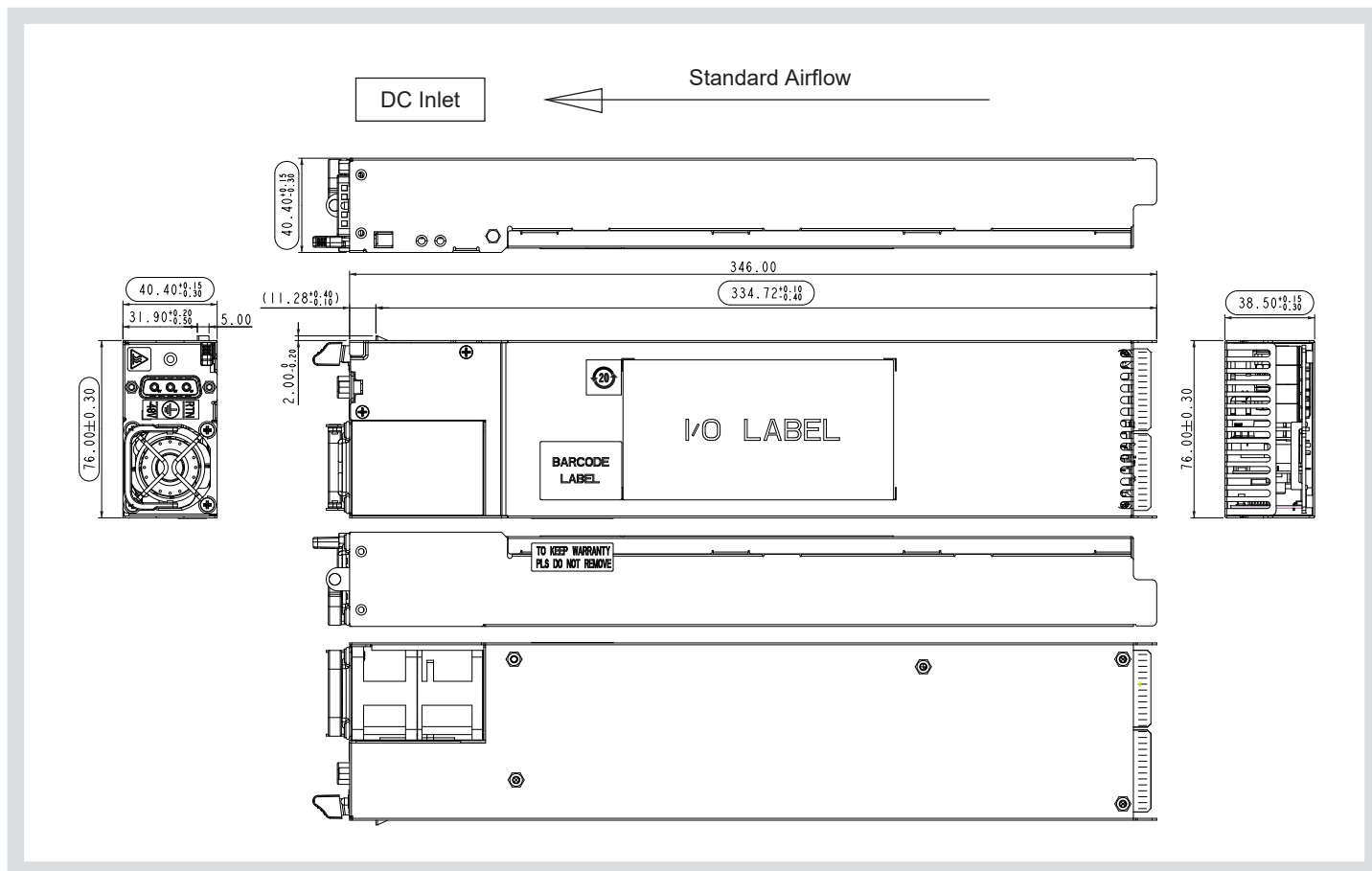
## SAFETY AND COMPLIANCE

UL, cUL, CE, CQC, CB, FCC class A, CISPR Class A, RoHS

# CDR-2021-3M1



## MECHANICAL DRAWING



### CONNECTORS

DC Inlet	DC Output	DC Output Mating
3Pin D sub	27Pairs Gold Finger	Amphenol GPCP4X2628110HR-AX1 or equivalent parts

### OUTPUT CONNECTOR PIN ASSIGNMENTS

Bottom						Top					
PIN#	Signal Name	PIN#	Signal Name	PIN#	Signal Name	PIN#	Signal Name	PIN#	Signal Name	PIN#	Signal Name
P28	DC Return	P38	5Vsb CO	P48	DC Return	P1	+12V	P11	SMBAlert	P21	+12V
P29	DC Return	P39	DC Return	P49	DC Return	P2	+12V	P12	DC GOOD	P22	+12V
P30	DC Return	P40	DC Return	P50	DC Return	P3	+12V	P13	+12V	P23	+12V
P31	DC Return	P41	DC Return	P51	DC Return	P4	+12V	P14	+12V	P24	+12V
P32	RS GND	P42	DC Return	P52	DC Return	P5	Ishare	P15	+12V	P25	+12V
P33	Reserved	P43	DC Return	P53	DC Return	P6	A1(address)	P16	+12V	P26	+12V
P34	12V RS GND	P44	DC Return	P54	DC Return	P7	A2(address)	P17	+12V	P27	+12V
P35	Wake Up Bus	P45	DC Return			P8	I2C SCL	P18	+12V		
P36	DC Return	P46	DC Return			P9	I2C SDA	P19	+12V		
P37	5Vsb CO	P47	DC Return			P10	PS ON/OFF	P20	+12V		

\* Product details and image are for reference and final product is subject to change without notice.



**Compuware Technology Inc.**

Tel: 886-2-8226-3936 Address: 5F., No. 232, Liancheng Rd., Zhonghe Dist., New Taipei City 235, Taiwan (R.O.C.)



[www.compuware-us.com](http://www.compuware-us.com)